

# GHS Band Department

W180 N11501 River Lane  
Germantown, WI 53022  
[www.gtownbands.com](http://www.gtownbands.com)

September 1, 2009

Dear Parents and Students:

Welcome to the 2009-2010 School Year!!! This handbook will provide you with answers to many of the questions you might have and let you know a few things that have changed for this year. It will also provide an overview of the many facets of the GHS Bands.

This handbook contains much information. Students are responsible for reading it in it's entirety. A few things to highlight include, the following:

- page 2. Band facts and details, a description of what is offered at GHS.
- page 3 The basis for our discipline policy; Respect.
- page 4 Basic Band Information
- page 5 Things to Have.
- page 6 Fundraising
- page 7 Scholarship and Trip Requirements
- page 9-10 Band Calendars
- page 11 Warhawk Band Booster Application Form
- page 12 Second Instrument Form
- page 13 Consent Form-RETURN by Sept. 10

If you have any questions about the program or about music in general, please contact either band director: James P. Barnes and Jonathan Bell.

Sincerely yours,

James P. Barnes  
262-502-7159  
[jbarnes@germantown.k12.wi.us](mailto:jbarnes@germantown.k12.wi.us)

Jonathan Bell  
262-502-7158  
[jbell@germantown.k12.wi.us](mailto:jbell@germantown.k12.wi.us)



## BAND FACTS & DETAILS

### \*\*\*The Bands\*\*\*

There are many bands at GHS. The entire band program is team taught by both Mr. Barnes and Mr. Bell. The directors work together to provide an excellent band experience. On your report card, you may have either Mr. Barnes or Mr. Bell listed as the teacher of the class. For each band there is a director "on the podium" and a director teaching lessons. The "podium" director is responsible for the final band grade a student earns.

### **1st Semester Bands**

**Wall of Sound** (Mr. Barnes) This is our competitive marching band. Auditions for the Wall of Sound are in February. The Wall rehearses several times during the spring and summer. There is a required band camp before school starts. During the first seven weeks the band meets as a whole with a marching focus. During the remainder of the semester, the group is split into two ensembles. Mr. Barnes rehearses one and Mr. Bell rehearses the other.

**Symphonic Band** (Mr. Bell) This group is made up of students in grades 10-12. Concert literature is the primary focus of this group. The Symphonic Band and the Concert Winds are combined for the Almost Anything Goes Show.

**Concert Winds** (Mr. Bell) The Concert Winds is an all freshmen group. The semester begins with a marching unit, including a performance with the Wall of Sound. Concert literature is a primary focus of this ensemble. The Symphonic Band and the Concert Winds are combined for the Almost Anything Goes Show.

### **2nd Semester Concert Bands**

Lesson assignments throughout the entire school year are based on 2nd semester band enrollment

**Wind Symphony** (Mr. Barnes) The top instrumental ensemble at GHS. The Wind Symphony consist of students in grades 10-12 and plays college level music.

**Symphonic Band** (Mr. Barnes) For students in grades 10-12. This group plays difficult high school level music.

**Concert Winds** (Mr. Bell) Consisting of all freshmen band students, the Concert Winds continue to develop their playing skills in all major keys, more complex rhythms, and refine playing technique. In addition to their concerts, this group provides the music for the GHS Graduation.

### **Other Performing Ensembles/Classes**

**Music Theory/Computer Composition** (Mr. Barnes) This first semester class studies the inner workings of music and applies that knowledge by composing music via computer technology.

**Jazz Ensemble** (Mr. Bell) Students in this class will study and perform music in the jazz style. Improvisational skills, jazz history, and jazz appreciation are units of study. Director approval is required for enrollment for this 2nd semester class.

### **Other Performing Opportunities**

**Chamber Series/Honors Recital**-This is our solo/ensemble festival. It is held at GHS in February. Students perform their solos and small ensembles for judges and receive a rating and comments. The Honors Recital will feature the most outstanding performers from the chamber series, as selected by the judges.

**Pep Band** (Mr. Bell) This is a volunteer group, open to all GHS band students. The pep band performs at GHS Basketball games. There are 4 rehearsals and 8 performances (4 boys and 4 girls games). During games, the pep band plays between the JV and varsity games and stays until the end of the varsity game. All pep band requirements are outside of the school day. Participating students earn points toward their band awards.

**Choir** (Mrs. Zorbini) It is possible for a student to participate in both band and choir at GHS. Mrs. Zorbini has many offerings, including ones that meet outside of the school day. Please see her for more details on the various choirs.

### **\*\*\*Respect\*\*\***

It is impossible to cover every discipline situation that may arise in a band program. As teachers our discipline philosophy is based on three areas of respect. If you show respect in all three areas, the band program will run very smoothly, there will be very few problems, and most importantly, we WILL make great music.

**Respect Yourself-** This involves living a healthy lifestyle and taking care of yourself. This also includes practicing and making sure you have your music and that your instrument is in good working order.

**Respect Your Peers-** Performing in a music ensemble is the ultimate team building activity. We have no "bench." How you prepare yourself for class GREATLY effects the success of everyone in your class. By working together, we will create great music.

**Respect the school-** This involves the equipment, the building facilities, and the faculty. Everything in the school is there for the success of the students (you). Showing respect for what is here, will help ensure that it will be here for years to come.

### **\*\*\*Calendar\*\*\***

Please take a very close look at the enclosed calendar of events. We are all cognizant of the busy lives our young people lead. This schedule is the most genuine attempt to provide both a learning experience for every student and to provide music and support for the community and school-without overburdening our band members. Please mark these dates in your calendar and planner. We need to plan very carefully for every public performance, so please contact us as soon as possible if there are any conflicts. Share this calendar at home and at WORK.

**SIGN, DATE AND RETURN the reply form at the back of this handbook.**

### **\*\*\*Grades\*\*\***

Grades are based on playing assessment (lessons), performances, written work, and class participation. The playing assessments make up approximately one-third of a student's grade and need to be taken seriously. When the lesson schedule is completed it will be handed out to all students, posted in the band room, and on the web site, [www.gtownbands.com](http://www.gtownbands.com). Grades are posted on [www.webgrader.com](http://www.webgrader.com).

### **\*\*\*Concert Attendance\*\*\***

Concerts are the culmination of a large amount of work by everyone involved. Attendance is required and extremely important. We also realize that sometimes conflicts occur. If a concert is missed for any reason, there are three things that the student must do to complete their concert requirement.

- 1] Play the concert music, by themselves for the director.
- 2] Watch/Listen to a recording of the concert and write a review.
- 3] Provide service to the band program.

1 hour for excused and 2 hours for an unexcused absence.

Absences are excused if the directors are notified, in writing, two weeks prior to the performance. Work excuses will be considered unexcused. Final decisions between excused and unexcused will be made by the band directors.

### **\*\*\*Chamber Series/Honors Recital\*\*\***

Solo and chamber group music is a significant aspect of musical study. The Chamber Series/Honors recital is GHS's opportunity to perform their solos and small ensemble for a judge and receive comments and a ribbon. **Participation in the chamber series is the 3rd quarter performance requirement for all band members.**

### **\*\*\*Tri-M\*\*\***

Tri-M is a national music honor society. Tri-M plans several activities throughout the school year, including performances, service projects, and assisting with many other musical endeavors.

### **\*\*\*Warhawk Band Boosters\*\*\***

The Warhawk Band Boosters is a support organization of the GHS Band Department. In addition to providing financial support for scholarships, the WBB is also involved by assisting in many band-related activities. We hope that all GHS Band Parents will become members of the WBB.

### **\*\*\*Youth Performing Arts Foundation\*\*\***

The Youth in Performing Art Foundation (YPAF) is a foundation with a goal to raise the needed funds to build a music facility at the High School. To learn more, please contact Mr. Bell ([jbell@germantown.k12.wi.us](mailto:jbell@germantown.k12.wi.us))

### **\*\*\*Band Instrument Lockers\*\*\***

The band instrument lockers are in a public/shared area of the school. As a result, band equipment is the only thing allowed in the lockers. Personal belongings, including class textbooks, must be kept in the student's hall locker. It is the student's responsibility to lock and secure their band locker. The Germantown School district, Germantown High School, and/or the GHS band department are NOT responsible for the contents of the locker.

### **\*\*\*Band Tours\*\*\***

The Warhawk Bands participate in tours on an every-other-year basis. Destinations have included Florida, St. Louis, California, New York City, London (England), Washington D.C., Edinburgh, Scotland, and Madrid, Spain. The next trip will be April, 2011 to New York City.

### **\*\*\*Band Awards\*\*\***

The GHS music department has an award system for students who participate in extra musical activities. This program includes a music letter, chevrons, numerals and a special Senior Award. Students earn these awards by participating in various aspects of the GHS Band Department.

### **\*\*\*Band Folders\*\*\***

Every student is provided with a band folder for their band music. If a folder is lost or destroyed,

students will be charged a fee. There will also be a replacement fee for any music that is lost.

### **\*\*\*The Blue Box\*\*\***

This is where everything is collected. It is kept near the entrance of the room. All payments, return forms, etc... go in the blue box. Make all payments by check (**NO CASH**) and put the **students** name in the memo line. The blue box is locked at all times.

### **\*\*\*Band Room Use\*\*\***

The band room is open during school days from 7:00 a.m.-3:30 p.m. Students may use the room during their lunch periods and study halls for something "musical." Students must sign in when using the band room during the school day.

### **\*\*\*Concert Dress\*\*\***

Concert dress for band students is basically black below the waist and a pure white shirt or blouse above the waist. Gentlemen's shirts must have collars. The dress shirts/blouses must be all white. Polo shirts are not acceptable. Designer logos are acceptable, but designs and patterns are not. All skirts must go below the knees. Black socks or hose are required. Shoes must also be worn. No sandals are allowed. Black band shoes are available to any student that needs them. The Concert Winds and Symphonic Band wear GHS Band T-Shirts for the Almost Anything Goes Show.

### **\*\*\*Instrumental Rental\*\*\***

Some students use instruments that are owned by the school district. School Board policy states that a \$50.00 rental fee be collected from those students. In addition, students and their parents sign a contract. During the first few weeks of school, all students using a school-owned instrument will meet with Mr. Barnes to go over the condition of the instrument. Families will be charged for any excessive wear & tear and damage to the instrument due to misuse DO NOT take school owned instruments to the shop for repair. See Mr. Barnes if repair is needed..

### **\*\*\*Cleaning Checks\*\*\***

Cleaning checks occur four times during the school year. An instrument that is not in good working order will not play well or in tune, no matter how good the player. A checklist of what is expected is included in this handbook.

## **\*\*\*Things to Have\*\*\***

There are several things a GHS band student must have. These are not only instrument necessities, but daily classroom needs. Specific music classes may have additional needs. Listed here are things **EVERY** GHS band student must have.

### **1. Instrument Necessities.**

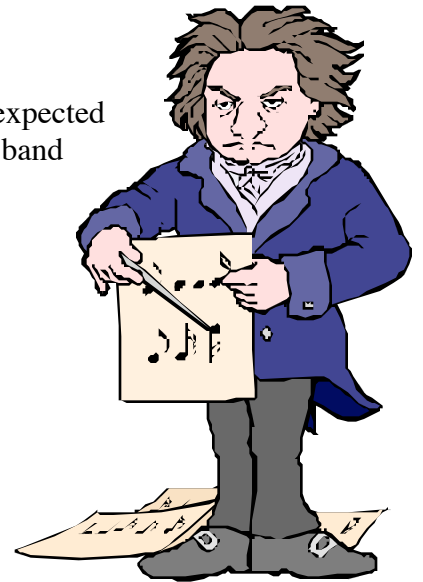
Clarinetist and saxophonists must have at least three extra reeds. Oboe and bassoon players must have an extra reed. One plastic reed equals two wood reeds. Brass instruments must have valve oil. Percussionists must provide two pairs of concert snare drum sticks (xylophone mallets for grades 10-12) and a stick bag.

### **2. Three Ring Binder (1" width) with dividers.**

Lesson Assignments and other things will be handed out in class. You will be expected to put them in this binder. You will use this binder for your entire high school band career.

The binder will need

- 5 total index dividers, marked as follows.
  - Lesson Assignments
  - Scales, Fingering Charts, and Smart Music Exercises
  - Calendar and Newsletters
  - In Class Assignments/Handouts
  - Concert Programs.
- 50 sheets of loose-leaf paper
- Folder pockets or a separate paper folder.

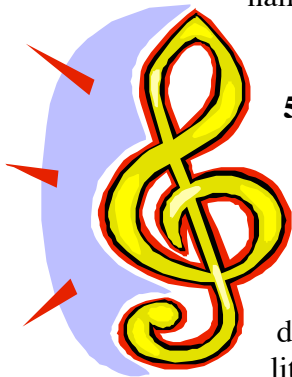


### **3. Band Lock**

All students must have blue or yellow-face locker from the bookstore. It is to be on your band locker and locked whenever you are away from your locker. Failure to use a band lock will result in losing the use of your the band locker.

### **4. Instrument Name Tag**

All instruments must have a name tag . Available at White House of Music or any luggage name tag will do.



### **5. Solo Books.**

As a part of your lesson curriculum, freshman and sophomore woodwind and brass players will need to purchase the solo book “Concert and Contest Collection” for their instrument. Percussionists will need Ben Hans’ Rudimental Drum Solos. If you have questions, please contact one of the band directors. If your private teacher has a specific solo for you to study, please discuss this with the band directors. Individualized plans will be made for juniors and seniors in regard to solo literature.

### **6. Pencil**

All students must have a pencil daily in class. There is a spot in you band folder for one. All hand written band assignments must be done in pencil and all music **must** be marked in pencil.



### **\*\*\*FUNDRAISING\*\*\***

The GHS Band department runs several fundraisers throughout the school year. They can be categorized in four groups:

**Warhawk Band Boosters**- funds go to help raise funds for scholarships and general band needs. Fundraisers include the Chili Supper, Raffle, We Care, Market Day, the Poker Run, and the annual Golf Outing.

**Tour Fund Raisers**- funds go to student trip accounts to help pay for the tour expenses. These include Entertainment Books, Mr. Z's (beyond \$20.00/person), Flower Sale, and others TBA.

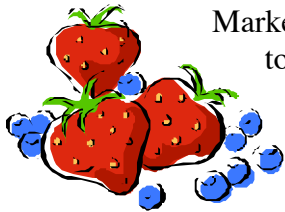
**Band Fund Raiser**- The Mr. Z's Sale in the fall helps provide much needed equipment, music and services that are not provided in the Band Department's budget. The first \$20.00 profit for each student goes to help the band. All profits beyond that go to student trip accounts.

**Wall of Sound**- Each spring, the Wall of Sound sells Kringles to help pay for Wall Expenses.

### **\*\*\*We Care\*\*\***

The WBB participates in the Pick'n Save We Care program. Over the years, over \$15,000 has been collected from "We Care." If you do not have the Warhawk Band Boosters as a chosen beneficiary on your Pick'n Save Advantage Card, please consider adding or changing to our account.

### **\*\*\*Market Day\*\*\***



Market Day is a monthly band booster fundraiser. Frozen food is ordered and delivered to the GHS Cafeteria on the first Thursday of the month. Order forms are available in the band room, the GHS main office., and at locations throughout Germantown. Orders can also be placed online at [www.marketday.com](http://www.marketday.com). Our account number is 16967.

### **\*\*\* CHILI SUPPER \*\*\***

The Warhawk Bands will once again sponsor a Chili Supper prior to the Homecoming Football Game on September 28th. This event is our annual scholarship fundraiser. We will need everyone's support with this event. Please fill out the attached volunteer form if you can help out. Our experience with Germantown parents have shown how supportive you are. Thank you!!



### **\*\*\*Money and Checks\*\*\***



There are several times throughout the year when money will need to be turned into the band office. These may include band tour payments, fundraising, pep band fee, Band Booster Events, Spirit Wear, and more. When sending money, please NEVER SEND CASH. Please write the student's name and what the money is for in the memo line of the check (i.e. Jane Doe/Mr. Z's).

# **\*\*\*Scholarship and Trip Requirements\*\*\***

## **\*\*\*MUSIC CAMP SCHOLARSHIPS\*\*\***

This past summer, dozens of GHS Musicians were granted over \$12,000 for attending music camps. The WARHAWK BAND BOOSTERS have been a major force in raising money for scholarships. Students wishing to be considered for a scholarship must:

- a. Sell a minimum of 3 chili supper tickets.
- b. Participate in the GHS Bands Solo/Chamber Series  
    \*\*minimum of a solo or 2 ensembles\*\*
- c. The family must be a member of the WBB.
- d. The family must volunteer two or more times throughout the school year.
- e. Participate in the Mr. Z's sale (\$20.00 minimum profit or donation)
- f. Students must be participate in a GHS band for the following school year.
- g. Complete and turn in the scholarship application on time.

## **\*\*\*Band Trip Requirements\*\*\***

Band trips are a privilege that is available to band students. Band tours occur every other school year. The next tour is scheduled for the 2010-11 school year to New York city.

In order to travel, students must complete the following requirements EACH year they are in band.

- a. Continual involvement in the band program.
- b. Maintain an above average grade in band (B- or higher)
- c. Maintain passing grades in ALL of their other classes.
- d. Continual improvement in their band lessons (as determined by the band staff).
- e. Participation and completion of ONE of the following.
  - 1] Wall of Sound
  - 2] Jazz Band
  - 3] Pep Band (six of eight performances)
  - 4] Perform a solo and one other event for the Chamber Series.





## The National Music Education Standards

- ~ Singing alone and with others, a varied repertoire of music
- ~ Performing on instruments, alone and with others, a varied repertoire of music
- ~ Improvising melodies, variations, and accompaniments
- ~ Composing and arranging music within specified guidelines
- ~ Reading and notating music
- ~ Listening to, analyzing, and describing music
- ~ Evaluating music and music performances
- ~ Understanding relationships between music, the other arts, and disciplines outside the arts
- ~ Understanding music in relation to history and culture

Developed by The National Association for Music Education, the standards for music suggest what every student in America should know and be able to do in music. More information about these standards and The National Association for Music can be found at [www.menc.org](http://www.menc.org).

# GERMANTOWN HIGH SCHOOL BAND DEPARTMENT

## CALENDAR 2009-2010

**This calendar is for ALL GHS Band members.**

Sept. 14	Warhawk Band Booster General Meeting	7:00 pm
Sept. 19	MARCHING BAND MADNESS	3:00-9:00 pm
Sept. 21	Mr. Z's Sale Ends-Forms due to the band room.	
Oct. 9	Homecoming Chili Supper	5:30 pm
Oct. 1	Mr. Z's Delivery-in the band room	2:15-5:00 pm
Nov. 6	<b>ALMOST ANYTHING GOES SHOW**</b> KMS 8th Grade Band Performs	7:00 pm
Nov. 7	<b>ALMOST ANYTHING GOES SHOW**</b> Battle of the Band	7:00 pm
<b><u>ALL GHS Bands perform BOTH nights</u></b>		
Nov. 11	Warhawk Band Booster General Meeting	7:00 pm
Jan. 6	WINTER BAND CONCERT**	7:00 pm
Feb. 10	Warhawk Band Booster General Meeting	7:00 pm
Feb. 9 & 11	CHAMBER SERIES**	5:30 pm
March 20	District Solo/Ensemble Festival	8:00-4:00 pm
Apr. 1	HONORS RECITAL**	7:00 pm
April 14	Warhawk Band Booster General Meeting	7:00 pm
April 22	SPRING BAND CONCERT #1 (CW & JE)**	7:00 pm
May 1	State Solo Festival	8:00-4:00 pm
May 6	Large Group Festival-Wind Symphony	
May 12	SPRING BAND CONCERT #2 (SB & WS)**	7:00 pm
May 17	Band Awards Night	5:30 pm
June 13	GHS Graduation-Freshmen Band	12:00 pm

**Attendance at BOTH spring concerts is required!!!**

\*\*Concerts are a graded portion of the band class. Calendar conflicts must be brought to the attention of the band director at least two weeks before the concert.

Check the band website for further updates.

[www.gtownbands.com](http://www.gtownbands.com)